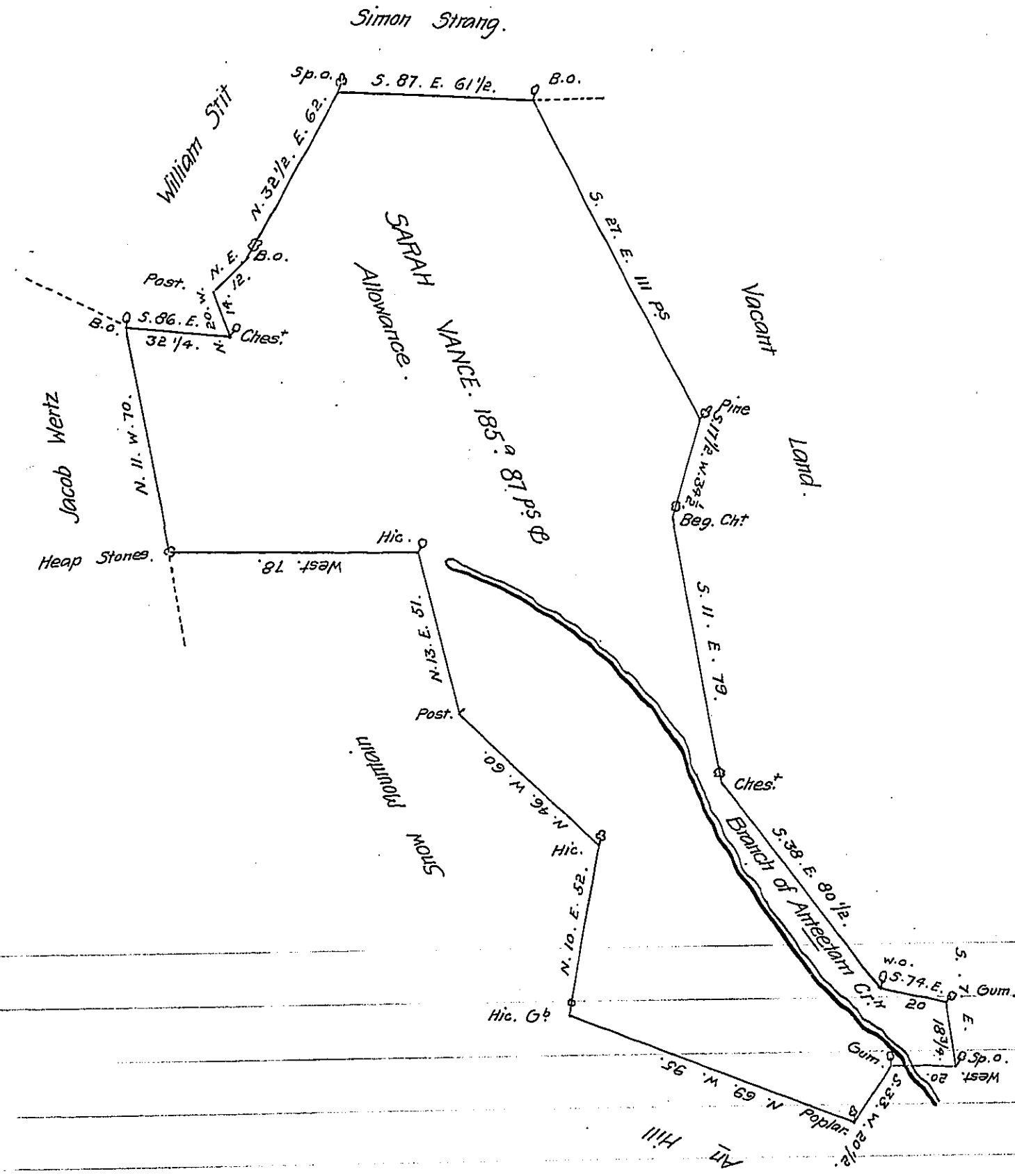


FORM No 1.



A Draught of a Tract of Land situate in Antrim Township in the County of Cumberland containing one hundred & eighty five Acres and 85 Perches and an Allowance of Six P. Cent for Roads &c. Survey'd Feb<sup>y</sup> 7<sup>th</sup> 1775 in pursuance of an Order of Survey granted to Sarah Vance Dated May 14<sup>th</sup> 1767. N<sup>o</sup> 3683.

John Armstrong D.S.

To John Lutens Esq<sup>r</sup>  
Surveyor General.

IN TESTIMONY that the above is a copy of the original remaining on file in the Department of Internal Affairs of Pennsylvania, made conformably to an Act of Assembly approved the 16th day of February, 1833, I have hereunto set my Hand and caused the Seal of said Department to be affixed at Harrisburg, this twenty fourth day of June 1908.

*Henry Houck*  
Secretary of Internal Affairs.